



# American Dahlia Society (ADS)

What It Is and Why I  
Should Belong

# ADS

---

FORMED IN 1915 AND INCORPORATED IN NEW YORK STATE

---

UMBRELLA ORGANIZATION FOR LOCAL DAHLIA SOCIETIES

---

THERE ARE 67 PARTICIPATING AND ASSOCIATED SOCIETIES IN THE US AND CANADA (2022)

---

THERE ARE OVER 2100 INDIVIDUALS WHO BELONG TO THE ADS IN THE US AND CANADA (2022)

---

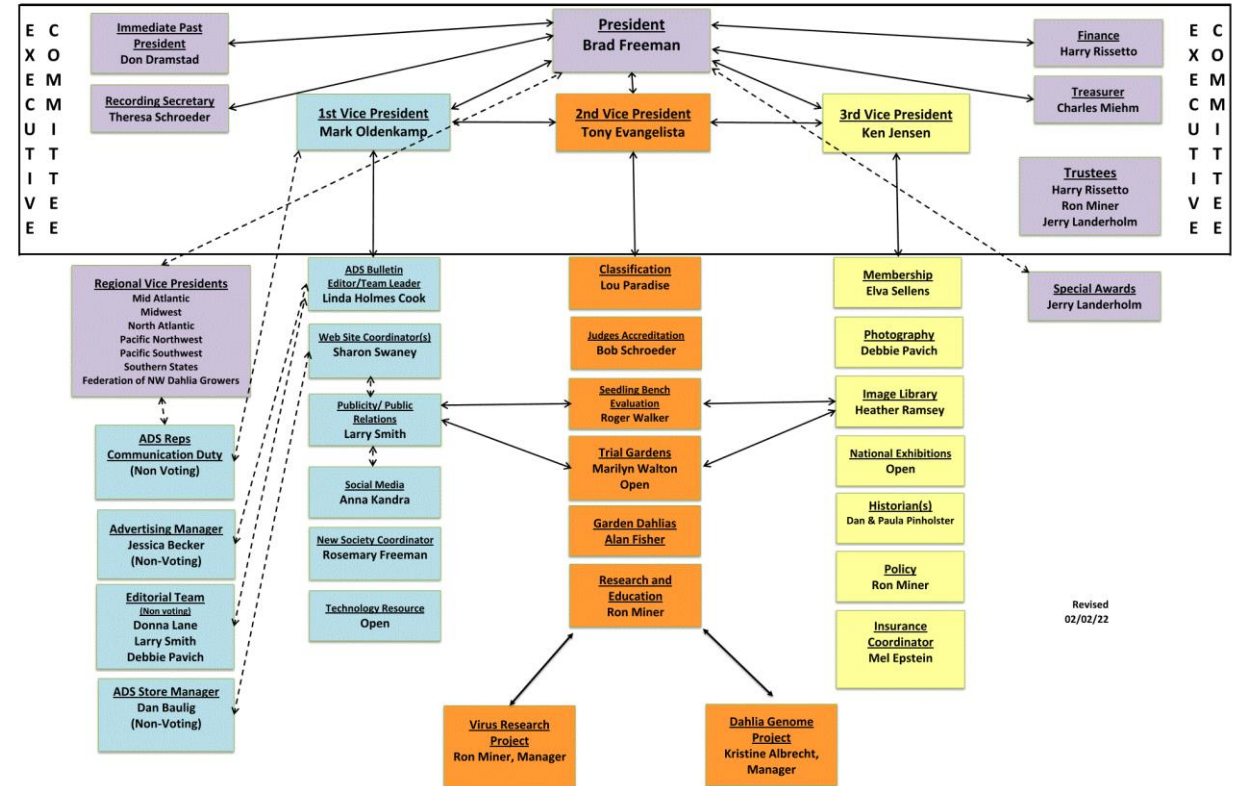
THERE ARE 18 OVERSEAS ASSOCIATES (2022)

# ADS MISSION STATEMENT

The American Dahlias Society is organized to promote and encourage the development of and appreciation of the dahlia through educational and research activities and by supporting the local dahlia societies.

# ADS ORGANIZATION STRUCTURE

**AMERICAN DAHLIA SOCIETY ORGANIZATION CHART**



# ADS COMMITTEES

TECHNOLOGY RESOURCES

CLASSIFICATION

BULLETIN EDITOR

FINANCE

GARDEN DAHLIAS

HISTORIAN

IMAGE LIBRARY

INSURANCE

JUDGES ACCREDITATION

MEMBERSHIP

NATIONAL SHOW

NEW SOCIETY COORDINATOR

PUBLICATIONS

PHOTOGRAPHY

PUBLICITY/PUBLIC RELATIONS

RESEARCH AND EDUCATION

SEEDLING BENCH EVALUATION

SPECIAL AWARDS

TRIAL GARDENS

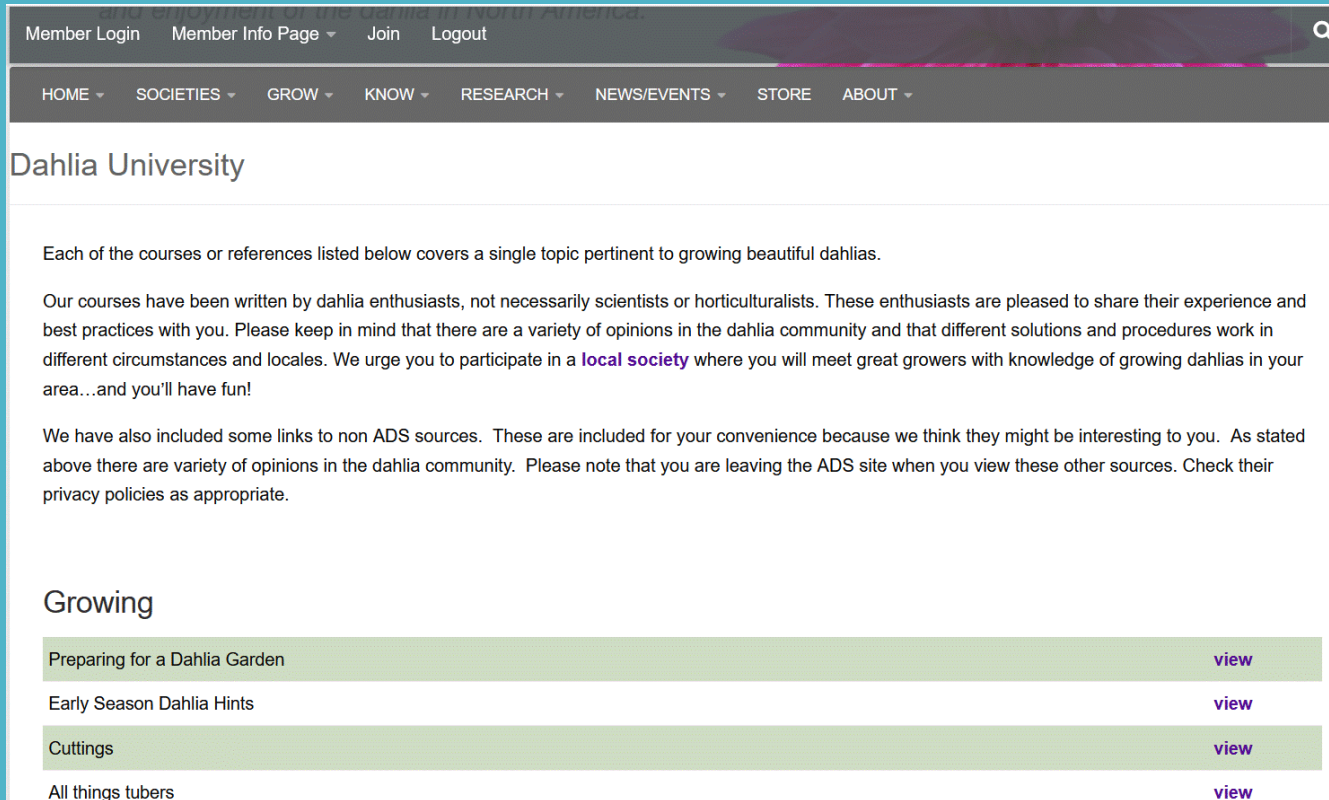
WEBSITE

SOCIAL MEDIA

# TOP 7 REASON THE ADS BENEFITS DAHLIA ENTHUSIASISTS

- ❖ KNOWLEDGE
- ❖ DAHLIA CLASSIFICATION SYSTEM
- ❖ RESEARCH
- ❖ TRIAL GARDENS AND SEEDLING  
BENCH EVALUATIONS
- ❖ PUBLICATIONS
- ❖ JUDGING
- ❖ COMMUNITY

# KNOWLEDGE



Member Login Member Info Page ▾ Join Logout

HOME ▾ SOCIETIES ▾ GROW ▾ KNOW ▾ RESEARCH ▾ NEWS/EVENTS ▾ STORE ABOUT ▾

## Dahlia University

Each of the courses or references listed below covers a single topic pertinent to growing beautiful dahlias.

Our courses have been written by dahlia enthusiasts, not necessarily scientists or horticulturalists. These enthusiasts are pleased to share their experience and best practices with you. Please keep in mind that there are a variety of opinions in the dahlia community and that different solutions and procedures work in different circumstances and locales. We urge you to participate in a [local society](#) where you will meet great growers with knowledge of growing dahlias in your area...and you'll have fun!

We have also included some links to non ADS sources. These are included for your convenience because we think they might be interesting to you. As stated above there are variety of opinions in the dahlia community. Please note that you are leaving the ADS site when you view these other sources. Check their privacy policies as appropriate.

### Growing

Preparing for a Dahlia Garden	<a href="#">view</a>
Early Season Dahlia Hints	<a href="#">view</a>
Cuttings	<a href="#">view</a>
All things tubers	<a href="#">view</a>

ONLINE RESOURCES ON ADS  
WEBSITE - <https://dahlia.org/>

❖ FUNDAMENTALS OF  
GROWING DAHLIAS

❖ DAHLIA UNIVERISTY

❖ GARDENING WITH DAHLIAS

❖ DAHLIAS AS A CUT FLOWER



**CLEARVIEW EDIE**

**2022**

**AMERICAN DAHLIA SOCIETY  
CLASSIFICATION  
AND  
HANDBOOK OF DAHLIAS**

Supplement to  
Bulletin of the American Dahlia Society

# CLASSIFICATION SYSTEM

- UNIFORM METHOD OF DESCRIBING DAHLIAS BY FORM, SIZE AND COLOR.
- EVOLVING PROCESS AS NEW FORMS, SIZES AND COLORS ARE ORIGINATED
- COMMON LANGUAGE TO DESCRIBE DAHLIAS



2022  
Handbook

## TABLE OF CONTENTS

CLASSIFICATION COMMITTEE	Inside Front Cover
FORM DEFINITIONS	3
COLOR CLASSIFICATION PROCEDURES & CLASSES	7
GLOSSARY OF TERMS	9
CULTIVAR DISSEMINATION	10
SIZE CLASSIFICATION & ABBREVIATIONS OF DAHLIAS	12
KEY TO CLASS NUMBERS	14
2022 CLASSIFICATION CHANGES	15
ALPHABETICAL LISTING OF DAHLIA CULTIVARS	16
ABBREVIATIONS OF ORIGINATORS AND COUNTRIES	52
NUMERICAL LISTING OF CULTIVARS & 2021 AWARD RECORD	56
TRIAL GARDEN PROCEDURES AND RULES	100
A.D.S. SEEDLING BENCH EVALUATION RULES	105
A.D.S. REPORTING GUIDELINES	107
PROCESS FOR UNCLASSIFIED DAHLIAS IN SHOWS	108
SEEDLING SCORECARD	110
CULTIVARS RETIRED FROM CLASSIFICATION CHANGES	113
CLASSIFICATION TABLE	114
PACIFIC NORTHWEST SUPPLEMENTAL LISTING	117
STANLEY JOHNSON MEDAL WINNERS	118
LES CONNELL MEDAL WINNERS	118

Cover Photograph — CLEARVIEW EDIE A-SC-W  
Winner of the 2019 Stanley Johnson Medal

Photograph by: Richard Parshall

COPYRIGHT: ALL RIGHTS RESERVED ©

# CHD – TABLE OF CONTENTS

- FORM DEFINITIONS
- COLOR CLASSIFICATION
- KEY TO CLASS NUMBERS
- DAHLIA CULTIVARS
- SEEDLING BENCH AND TRIAL GARDEN RULES



This Photo by Unknown Author is licensed under [CC BY-SA](#)

# RESEARCH

- VIRUS

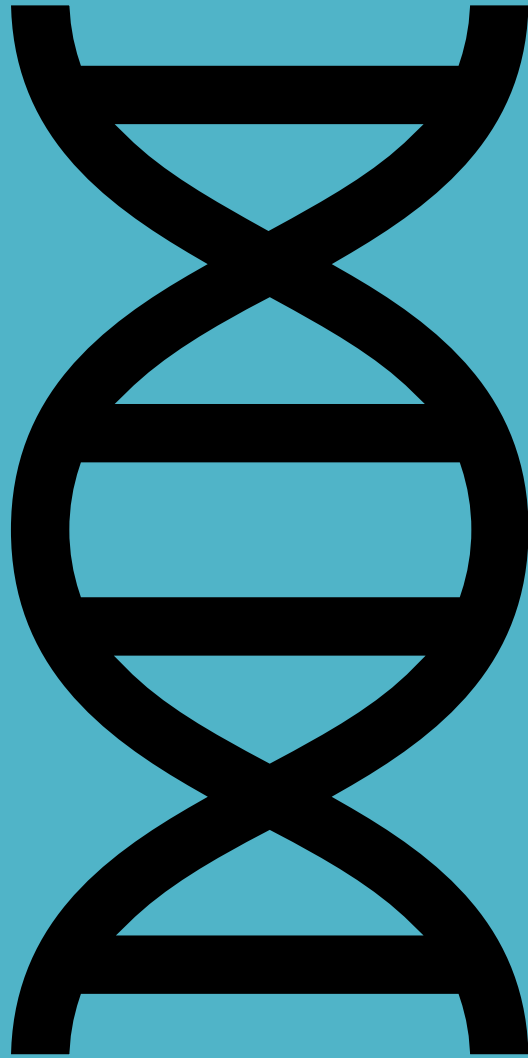
- GENOME





# RESEARCH - VIRUS

- STARTED IN EARLY 1990s
- ENDOWED CHAIR AT WSU ESTABLISHED IN 2014 WITH HELP FROM THE SCHEETZ-CHUEY CHARITABLE FOUNDATION
- FOCUS ON STRATEGIES USED SUCCESSFULLY WITH COMMERCIAL CROPS SUCH AS POTATOES AND ONIONS
- TESTING / DEVELOPMENT OF CLEAN STOCK



## RESEARCH – GENOME

- OVERALL GOAL IS TO MAP THE DAHLIA GENOME
- PRELIMINARY RNA TESTING HAS BEEN COMPLETED
- THE NEXT STEP IS INITIAL DNA SEQUENCING AND ASSEMBLY





## TRIAL GARDEN AND SEEDLING BENCH EVALUATION

- A SYSTEM TO EVALUATE NEW CULTIVARS OFFERED BY HYBRIDIZERS.
- THERE ARE EIGHT TRIAL GARDENS ACROSS THE UNITED STATES AND CANADA  
(<https://dahlia.org/docsinfo/trial-garden-overview/trial-garden-locations/>)
- REQUIREMENTS ARE FOUND IN THE CURRENT EDITION OF THE CHD.



# SEEDLING AWARDS

- THE DERRILL W. HART MEDAL – TRIAL GARDEN
- THE LYNN B. DUDLEY MEDAL – SEEDLING BENCH
- THE EVIE GULLIKSON MEDAL – SEEDLING & TRIAL GARDEN – OTHER TYPES



# OTHER AWARDS

STANLEY JOHNSON MEDAL –  
HIGHEST NUMBER OF  
AWARDS IN A YEAR



LES CONNELL MEDAL –  
HIGHEST NUMBER OF  
AWARDS IN A FIVE-YEAR  
PERIOD





BULLETINS – JANUARY, JUNE, OCTOBER



CLASSIFICATION BOOK (CHD)



JUDGING ROSTER - SPRING



WEBSITE



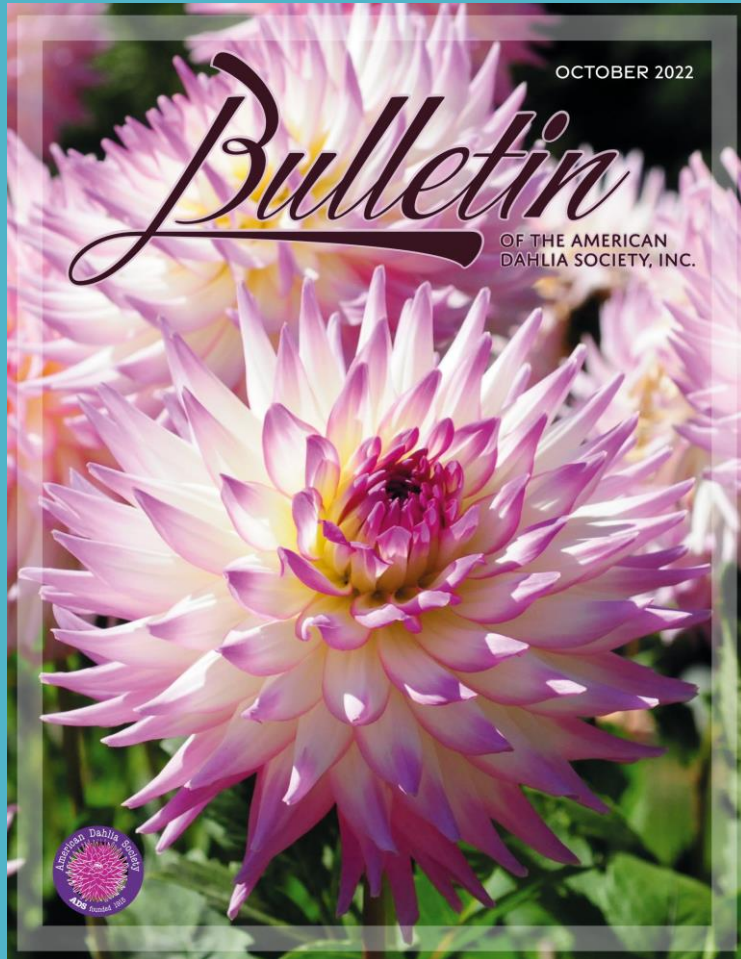
DAHLIA SHOW REPORTS (ONLINE) - DECEMBER



SEEDLING REPORTS (ONLINE) - DECEMBER

# PUBLICATIONS

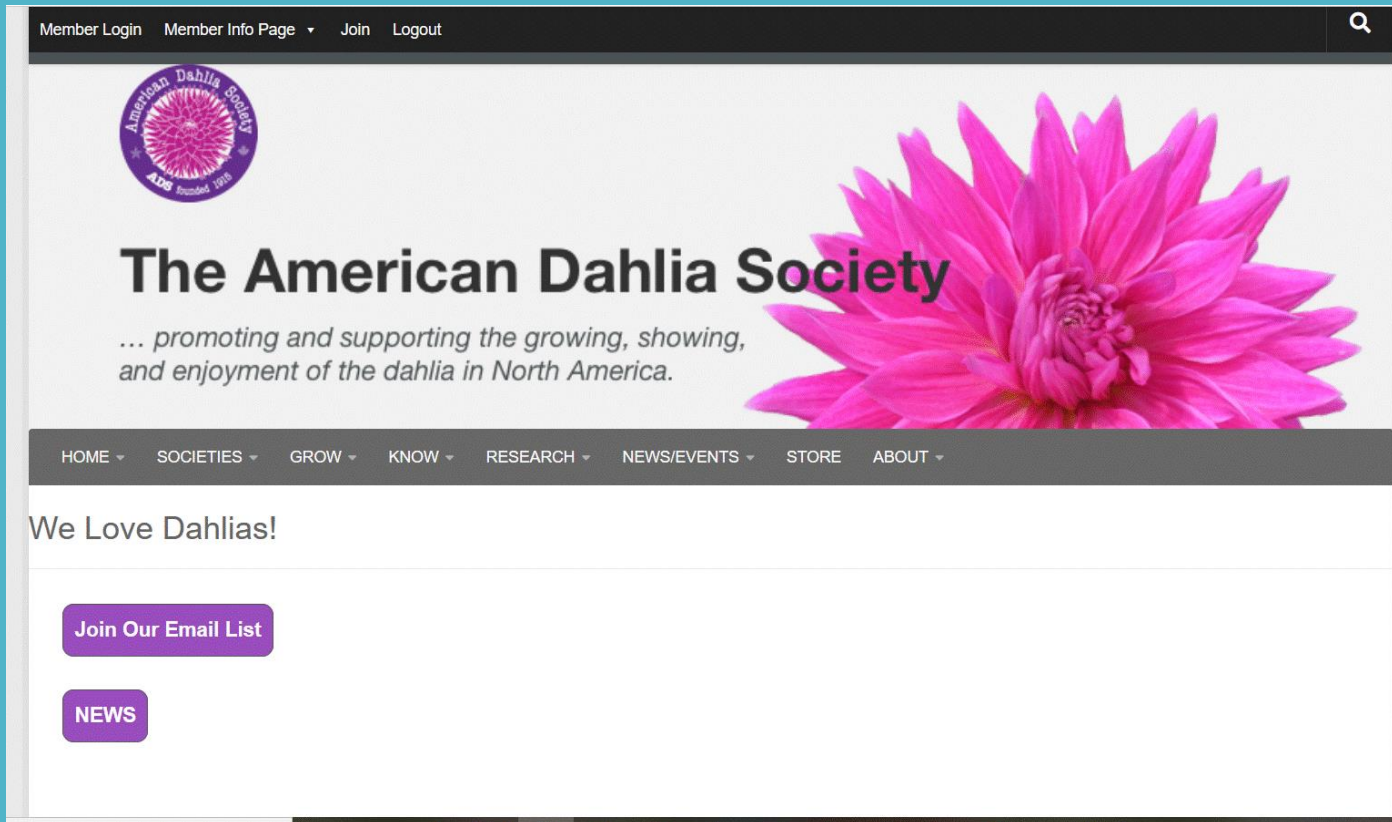




# ADS BULLETIN

## OCTOBER 2022 ARTICLES:

- ADDICTED TO DAHLIAS
- THE OTHER SIDE OF THE GARDEN
- FAMILY TRADITION
- CUT FLOWER COMMITTEE
- THE ART OF DAHLIAS
- MUCH MORE



ADS WEBSITE -  
<https://dahlia.org/>

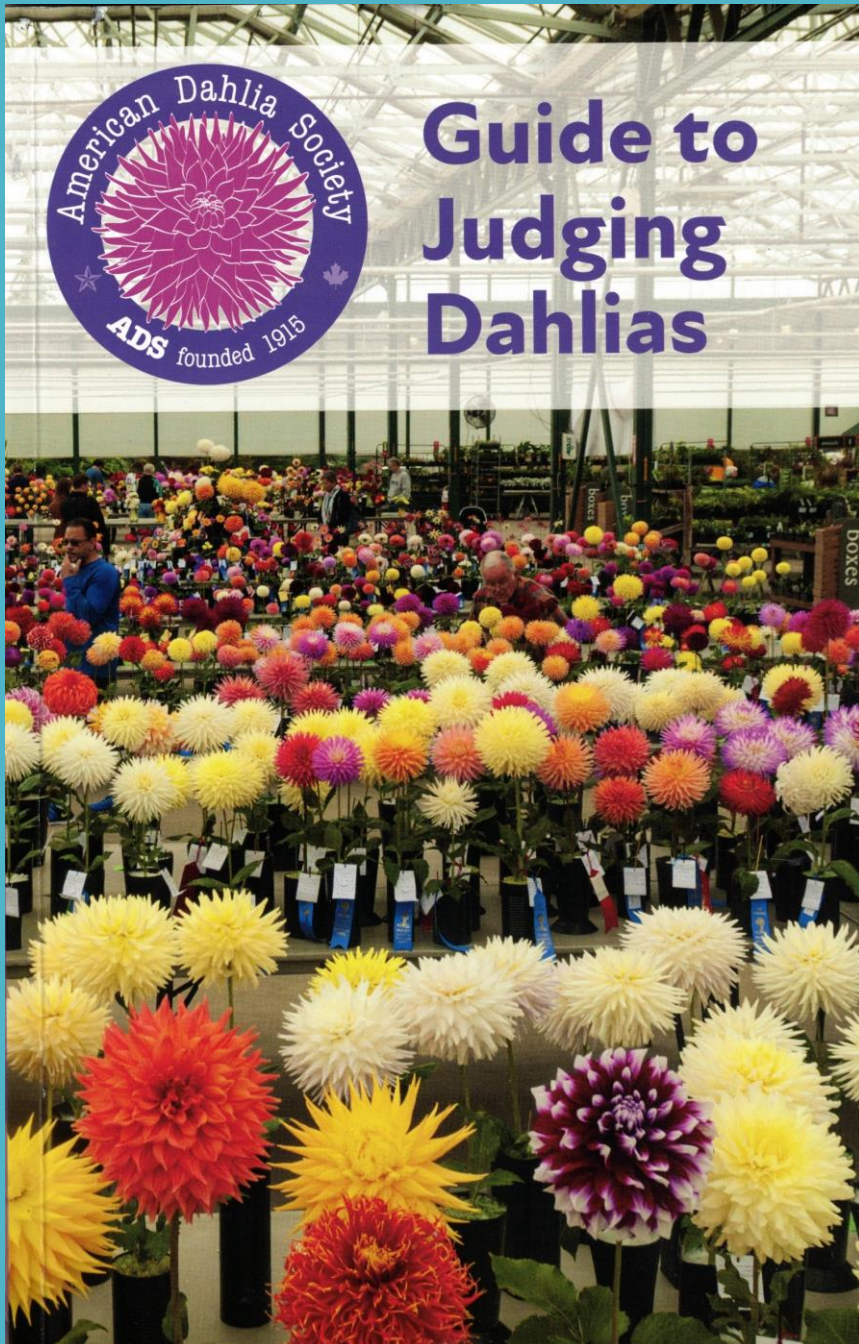




# JUDGING

- ☐ CLERK
- ☐ CANDIDATE
- ☐ ACCREDITED
- ☐ SENIOR
- ☐ HONORARY





# JUDGING REQUIREMENTS

- ☐ UNIFORM SET OF STANDARDS FOR JUDGING DAHLIAS
- ☐ “GUIDE TO JUDGING DAHLIAS” – OVERALL PRINCIPALS AND PRACTICES
- ☐ THESE ARE THE MINIMUM REQUIREMENTS AND THE LOCAL ORGANIZATIONS CAN ADD ADDITIONAL REQUIRMENTS IF DESIRED.





# COMMUNITY

- NATIONAL SHOWS
  - 2022 – WASHINGTON D.C.
  - 2023 – PORTLAND, OR
  - 2024 – WENATCHEE, WA
- MEETING NEW PEOPLE AND ENJOYING A SHARED INTEREST
- LEARNING NEW AND INTERESTING INFORMATION

# MEMBERSHIPS

INDIVIDUAL (USA) - \$30.00  
PER YEAR\*



HOUSEHOLD (USA) - \$35.00  
PER YEAR\*



\*SEE ADS WEBSITE FOR  
ADDITONAL INFORMATION  
OR CONTACT YOUR LOCAL  
DAHLIA SOCIETY